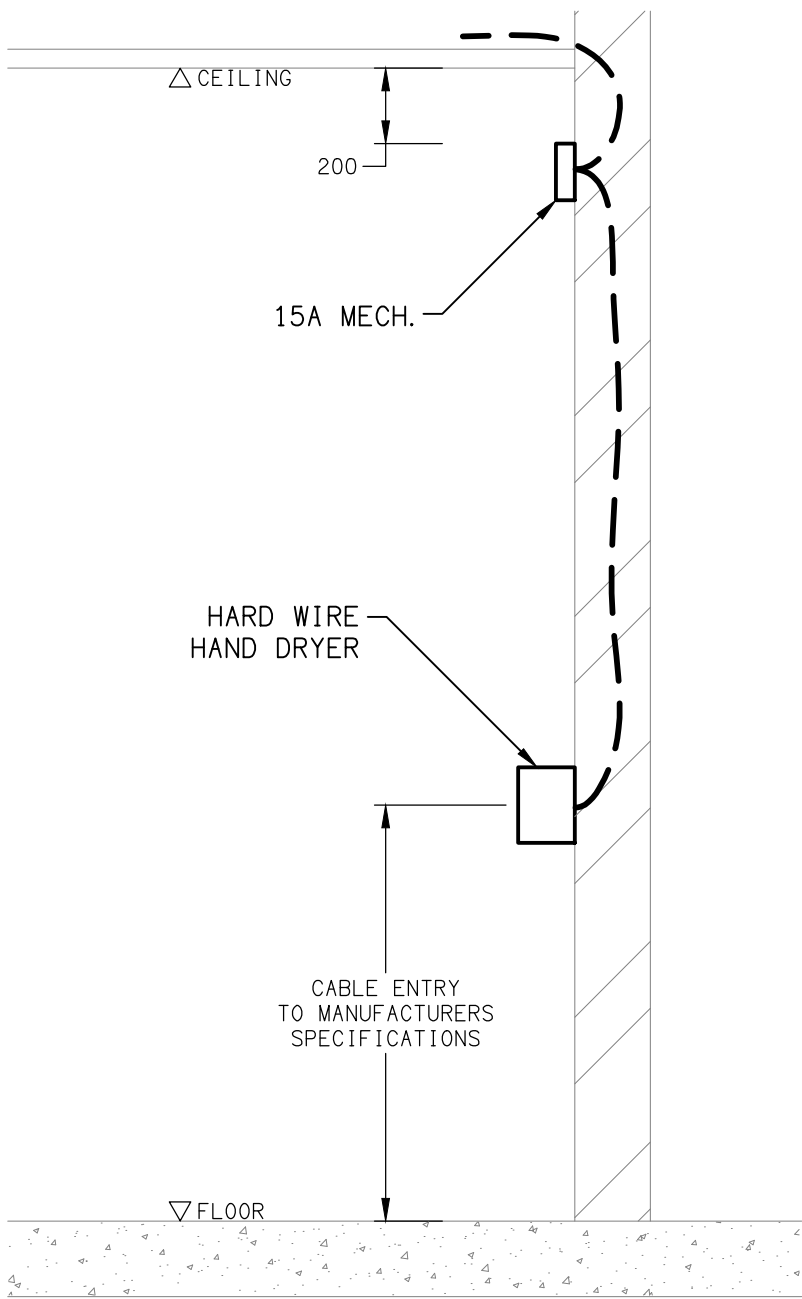


LEGEND

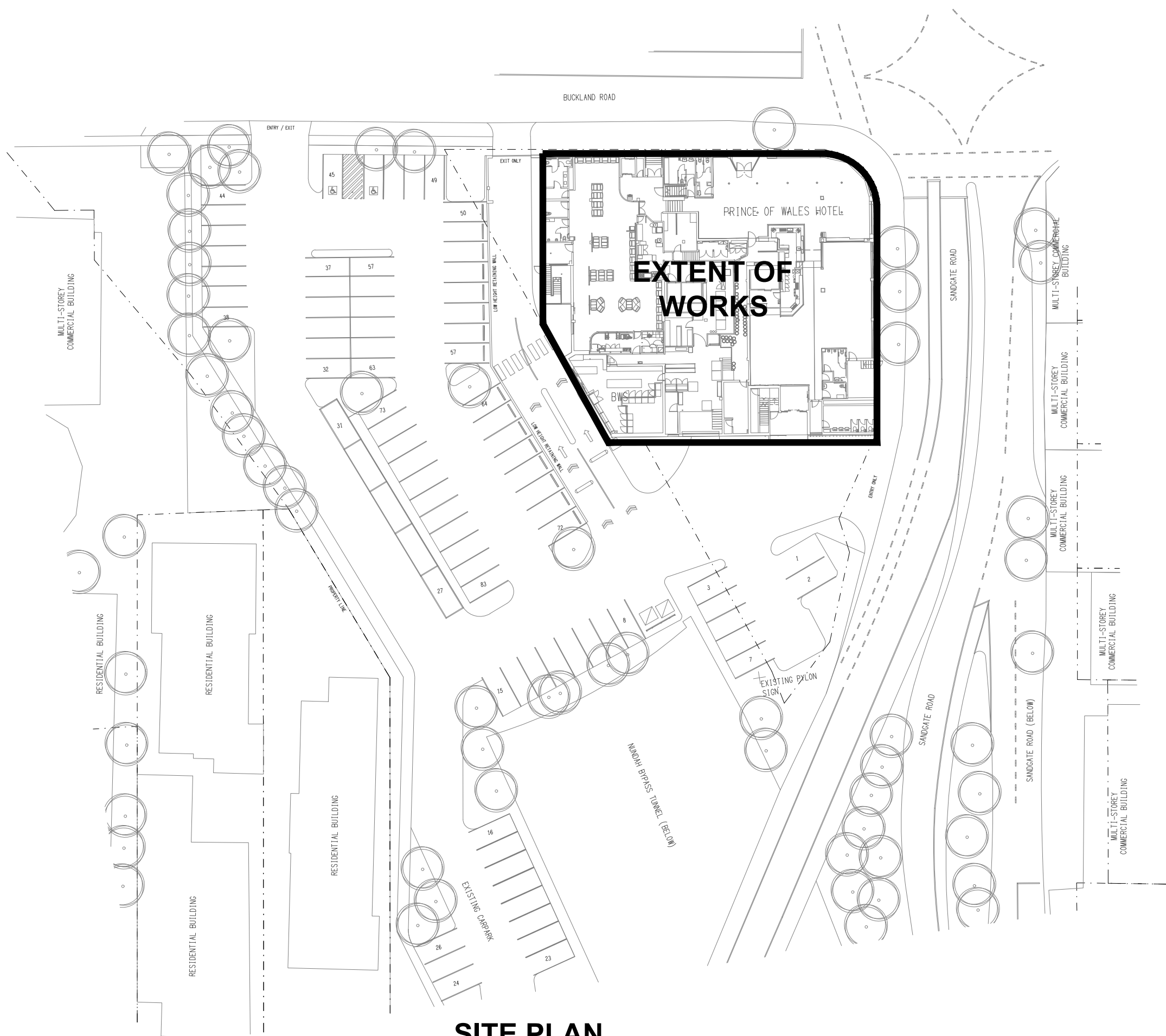
- ELECTRICAL SERVICES SWITCHBOARD.
- SWITCHBOARD / CONTROL PANEL NOT PROVIDED AS PART OF THE ELECTRICAL SUBCONTRACT.
- SINGLE POWER OUTLET.
- DOUBLE POWER OUTLET.
- SPECIAL PURPOSE POWER OUTLET.
- EXISTING POWER OUTLET TO REMAIN AS NOTED.
- SIGNAGE CONNECTION.
- SINGLE PHASE ISOLATOR.
- THREE PHASE ISOLATOR.
- GAMING JUNCTION BOX.
- CONDUIT ROUTE.
- HAND DRYER CONNECTION.
- FAN CONTROL, TYPE x.
- LIGHTING CONTROL SWITCHPANEL, TYPE x.
- ONE-WAY LIGHT SWITCH.
- TWO-WAY LIGHT SWITCH.
- CIRCUIT LINE.
- SWITCH LINE.
- POWER CIRCUIT DESIGNATION.  
DENOTES DB AND CIRCUIT.
- LIGHTING CONTROL CHANNEL REFERENCE.
- ELECTRICAL EQUIPMENT AS NOTED.
- REFER TO DETAIL NOTED FOR THE AREA SHOWN HATCHED.  
ADDITIONAL OUTLETS & FITTINGS MAY BE SHOWN ON DETAIL.
- FIRE INDICATOR PANEL.
- SMOKE DETECTOR.
- RECESSED FIRE ALARM SPEAKER.
- FIRE ALARM DOOR SYSTEM INTERFACE.
- F01: CEILING FAN
- HR01: WALL MOUNTED HEATER.
- Sx: LED STRIP LIGHT, TYPE AS NOTED.
- E1: GENERAL RECESSED LED EMERGENCY LIGHT, WHITE.
- E2: GENERAL RECESSED LED EMERGENCY LIGHT, BLACK.
- EX: EMERGENCY LED EXIT LIGHT, WHITE UNLESS NOTED AS BLACK.
- BL01: TREE BUD LIGHTS.
- L1: RECESSED ADJUSTABLE DOWNLIGHT, DIMMABLE.
- L2: RECESSED DOWNLIGHT, DIMMABLE, BLACK.
- L3: RECESSED ADJUSTABLE DOWNLIGHT, DIMMABLE, WHITE.
- L4: EXISTING RECESSED DOWNLIGHT TO REMAIN.

LEGEND

- L5: SURFACE MOUNTED DOWNLIGHT, DIMMABLE.
- L6: RECESSED ADJUSTABLE DOWNLIGHT, DIMMABLE.
- L7: RECESSED DOWNLIGHT, DIMMABLE.
- L8: EXISTING LIGHT TO REMAIN.
- L9: 600 x 600 FLAT PLATE RECESSED PLASTER BOARD FITTING.
- L10: RECESSED DOWNLIGHT, DIMMABLE, WHITE.
- PD01: SUSPENDED DECORATIVE SUSPENDED PENDANT, DIMMABLE.
- PD02: SUSPENDED DECORATIVE SUSPENDED PENDANT, DIMMABLE.
- PD03: SUSPENDED DECORATIVE SUSPENDED PENDANT, DIMMABLE.
- PD04: SUSPENDED DECORATIVE SUSPENDED PENDANT, DIMMABLE.
- PD05: SUSPENDED DECORATIVE SUSPENDED PENDANT, DIMMABLE.
- WL01: WALL LIGHT, DIMMABLE.
- WL02: WALL LIGHT, DIMMABLE.



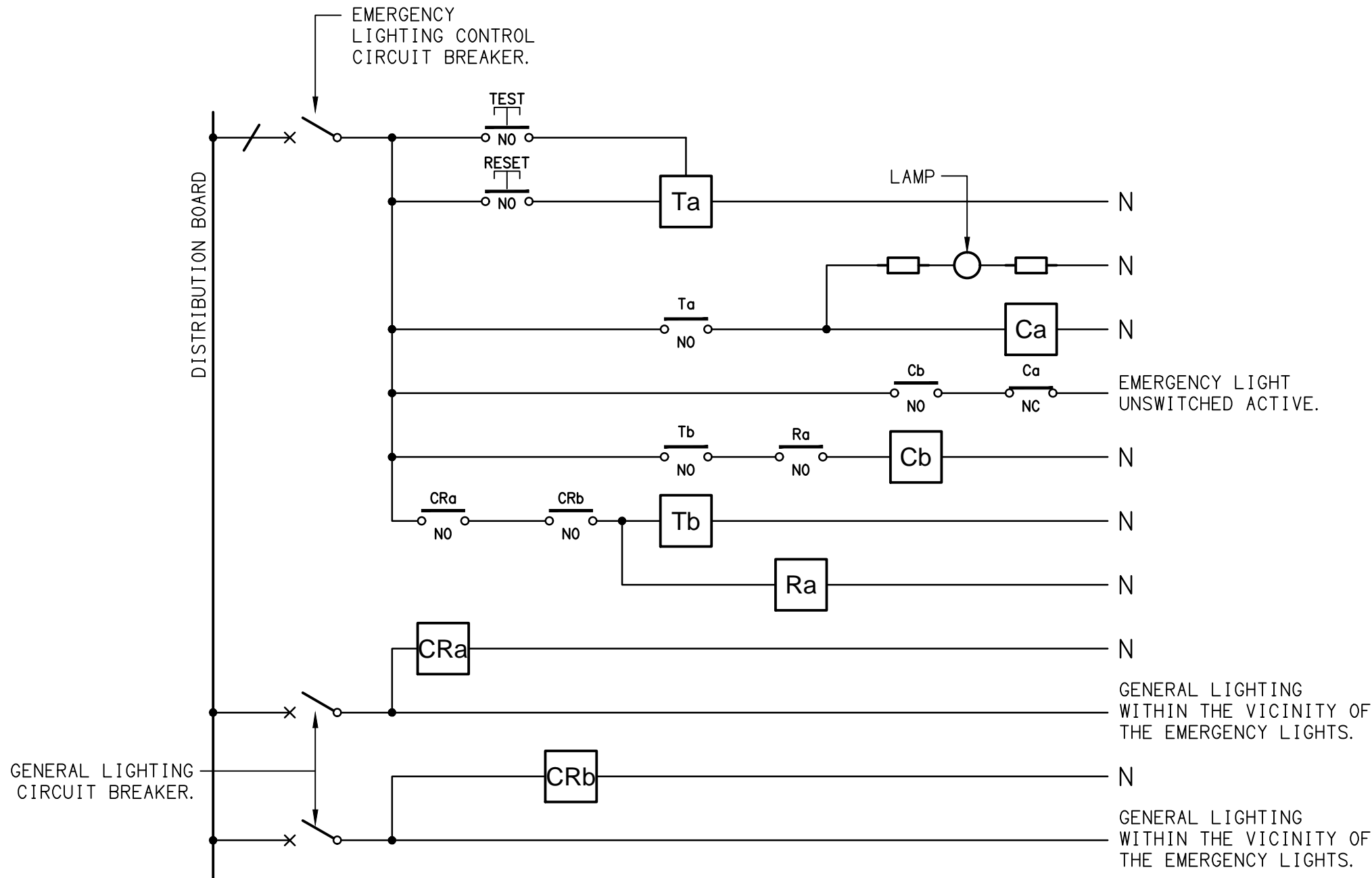
DETAIL  
HAND DRYER CONNECTION  
NOT TO SCALE



SITE PLAN  
EXTENT OF WORKS  
SCALE 1: 500

EQUIPMENT:

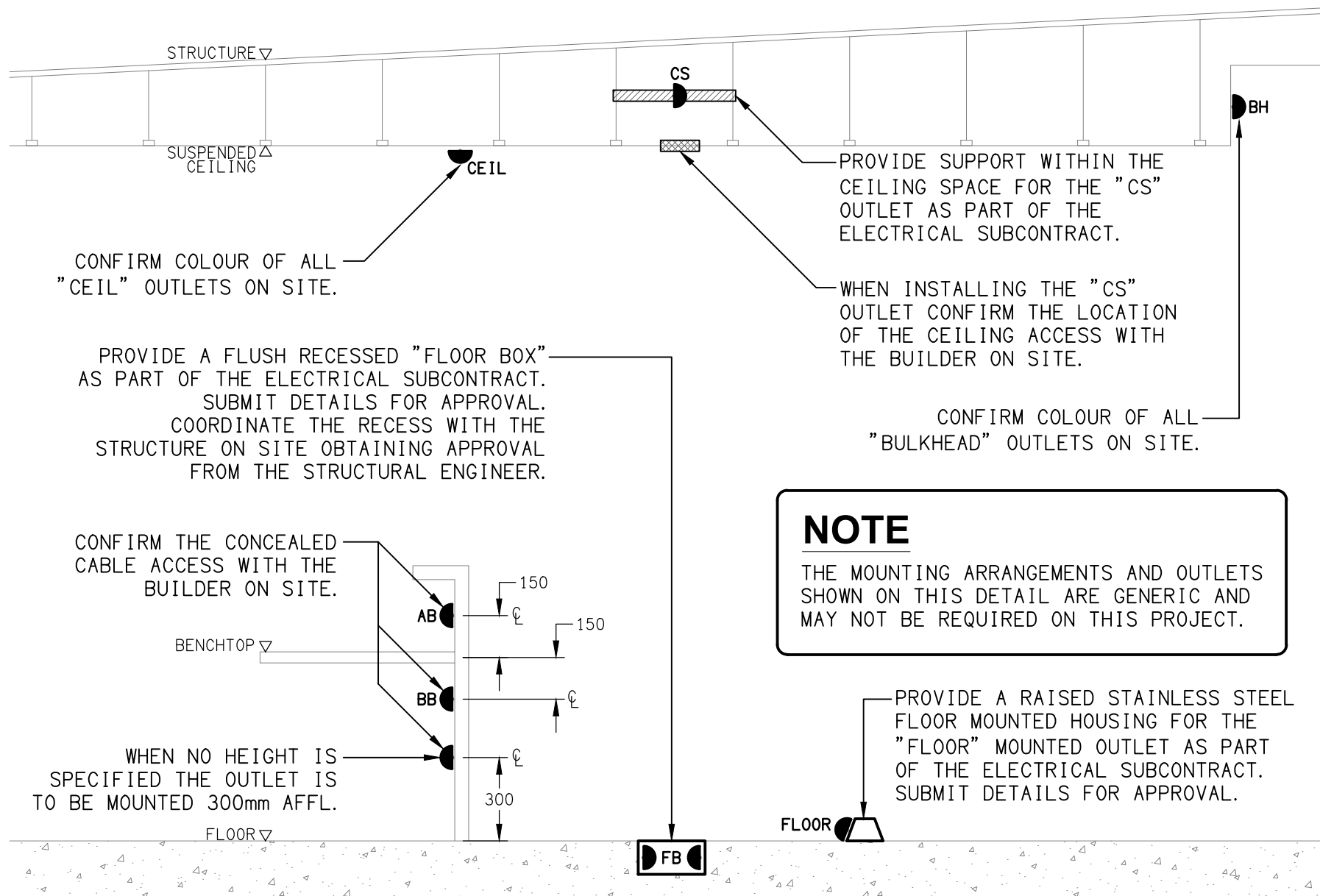
- TEST – TEST PUSH BUTTON MOUNTED ON THE DISTRIBUTION BOARD ESCUTCHEON.
- RESET – RESET PUSH BUTTON MOUNTED ON THE DISTRIBUTION BOARD ESCUTCHEON.
- LAMP – AMBER TEST INDICATING LAMP MOUNTED ON THE DISTRIBUTION BOARD ESCUTCHEON.
- Ta – ADJUSTABLE 0-3 HOUR TIMED RELAY.
- Tb – 15 MINUTE RUN-ON TIMER TO OPERATE UPON THE RETURN OF MAINS POWER.
- Cx – CONTACTOR x.
- CRx – CONTROL RELAY x.
- Rx – RELAY x.



NOTES

1. THE EMERGENCY LIGHT UNSWITCHED ACTIVE / GENERAL LIGHTING SWITCHED ACTIVE CIRCUIT ARRANGEMENT AND CONTROL IS TYPICAL FOR ALL CIRCUITS SUPPLYING EMERGENCY LIGHTS.
2. PROVIDE ADDITIONAL CONTROL RELAYS (CRx) CONFIGURED AS PER CRa AND CRb FOR ALL ADDITIONAL LIGHTING CIRCUITS THAT SUPPLY LIGHTS IN THE VICINITY OF THE EMERGENCY LIGHTS.

SCHEMATIC  
EMERGENCY LIGHTING  
NOT TO SCALE



DETAIL  
TYPICAL OUTLET MOUNTINGS  
NOT TO SCALE